

Standard Security Fence Panels



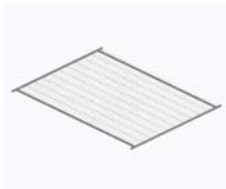
FENCING PRODUCTS

Email: rfq@outfrontps.com

www.outfrontps.com

1 800 282 1239

Standard Security Fence Panels



Security Fence Panel

Part # F1010

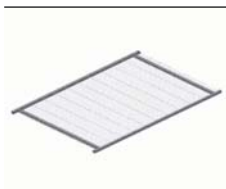
*10' L x 7 1/2' H Fence Panel - Galvanized
(Spikes Top & Bottom)*



Security Fence Panel

Part # F1006

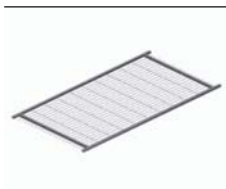
*6' L x 7 1/2' H Fence Panel - Galvanized
(Spikes Top & Bottom)*



Security Fence Panel

Part # F1005

*5' L x 7 1/2' H Fence Panel - Galvanized
(Spikes Top & Bottom)*

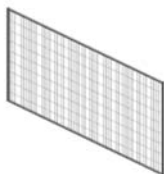


Security Fence Panel

Part # F1004

*4' L x 7 1/2' H Fence Panel - Galvanized
(Spikes Top & Bottom)*

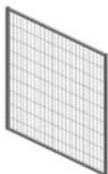
Easy Fence Panels



Easy Fence Panel

Part # EF1010

*10' L x 6' H Easy Fence Panel -
Galvanized
(No Spikes Top or Bottom)*



Easy Fence

Part # EF1005

*5' L x 6' H Easy Fence Panel -
Galvanized
(No Spikes Top or Bottom)*

Standard Security/Easy Fence Components



Fence Support Base

Part # F3001

Support Base (Steel Galvanized)



Gate Support Base

Part # F3015

Gate Support Base (Steel Galvanized)



Center Pinned Support Base

Part # EF3001

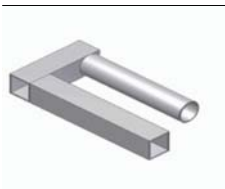
Easy Fence "Center Pinned" Support Base



Fence Clamp

Part # F2001

Fence Clamp



Fence Clamp

Part # F2001-C

Top "U" style Fence Clamp



Sliding Gate Hardware

Part # F2007

Sliding Gate Hardware (2 brackets, 2 wheels +sliding gate base))



Gate Hardware Set

Part # F2003

Gate Hardware Set Interchangeable Wheel & top Swing Bracket



Fence Brace

Part # F300ASP

Fence Brace-angle brace clips on to fence to provide addition stability where required



Gate Wheel

Part # F2003B

Gate Wheel Assembly (wheel & stem)



Gate Chain

Part # F2005

Gate Chain



Fence Wall Bracket

Part # F6001

Fence Wall Bracket



Sign Holder

Part # F2008

Pinch-on Sign Holder 6" x 12" (decals not included)



Fence Support Base

Part # CF3001

*Concrete Support Base
(80lbs) interchangeable with (F3001 & F3015)*

For applications where spike holes in asphalt or concrete are not an option. (Price Varies)

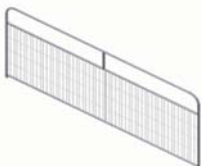


Easy Fence Storage Cradle

Part # EFR20

*Easy Fence Storage Cradle
Holds 25 Fence Panels and Hardware*

Special Event Fence Panels



Special Event Fence Panel

Part # SEF410WM

10' L x 4' H Special Event Fence Panel - Galvanized

Special Event Fence Components



Fence Base

Part # SEFB-P

Special Event Fence Base - Pipe Base



Fence Base

Part # SEFB-F

Special Event Fence Base - Flat Base

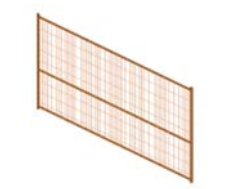


Fence Cradle

Part # SEFR

4 X 6 Crowd Control Fence Cradle

High Visibility Fence Panels

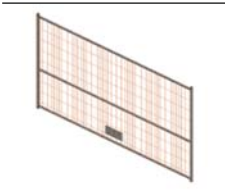


High Visibility Fence Panel

Part # HV1010

Powder Coated Orange High Visibility Fence

6ft high x 10ft long



Galvanized High Visibility Fence Panel

Part # HV1010-G-SP

Galvanized High Visibility Fence c/w sign plate welded prior to fabrication 6ft high x 10ft long

6ft high x 10ft long

High Visibility Fence Components



High Visibility Fence Joint

Part # HV2001

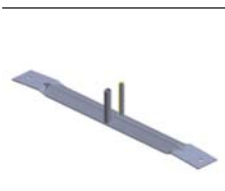
Powder Coated Orange High Visibility Fence Coupler



High Visibility Fence Base

Part # HV3001

Powder Coated Orange High Visibility Fence Base



High Visibility Fence Base

Part # HV3001-G

Galvanized - High Visibility Fence Base



High Visibility Fence Joint

Part # HV2001-G

Galvanized - High Visibility Fence
Coupler



High Visibility Fence Gate Wheel

Part # HV2003

Gate wheel for High Visibility Fence



High Visibility Fence Fence Storage Cradle

Part # HVR40

High Visibility Fence Cradle - fits 40
Panels & Bases

Safety Guard Rail



Safety Guard Fence

Part # SGF1004

Safety Guard Fence 10'L x 4'H



Multi Purpose Barrier Fence Post

Part # BFP01

Multi Purpose Barrier Fence Post



Multi Purpose Barrier Fence Corner Post

Part # BFP02

Multi Purpose Barrier Fence Corner Post



Multi Purpose Barrier Clamping Fence Slab Grab Clamp

Part # BFP03

Barrier Fence Slab Grab Clamp



Barrier Fence Post - Jersey

Part # BFPJ

Barrier Fence Post - Jersey (Steel
Galvanized) 1 3/4" Post
compatible for HV Fence & Easy Fence